

MATT CREVIN  
MR. LYAN  
JEFF SCHLARB  
WARREN SHEETS  
ERIC ZENER  
& MORE

# CAPTURE

MAGAZINE  
\$9.99







# Bohemian Rhapsody *no* ordinary.

INSIDE JEFF SCHLARB'S MIND OF  
DESIGN THROUGH THE WALLS OF  
DAVID & JENNIFER RISHER'S PAC  
HEIGHTS SANCTUARY

PHOTOGRAPHY BY DAVID DUNCAN LIVINGSTON  
INTERVIEW BY PAIGE PORTER FISCHER









San Francisco designer Jeff Schlarb of Green Couch Interior Design is known for telling the 'story' of a house and its homeowners. With an eye for structural and architectural nuances, Jeff considers it his duty to pay homage to the bones of a house while drawing inspiration from the people who live there.

In this San Francisco project, clients David and Jenn Risher wanted to design and furnish their updated Victorian residence in Pacific Heights. The home itself was stunning, architecturally. But Jeff was drawn even more to the Rishers, whose lives are devoted to helping others. A former Microsoft and Amazon executive (responsible for transforming Amazon from a \$16 million dollar book-selling business to a \$4 billion dollar global retail site), David took a year off to travel the world with his family, visiting orphanages and third-world villages along the journey. He was inspired to create Worldreader, a charity that brings e-reader technology to impoverished parts of the world—and gives kids in these remote areas access to books.

The Rishers were living in a newly renovated home that lacked the interior design to match its architectural beauty. They hired Schlarb to bridge the gap—and bring a sense of approachable elegance to the residence.

"The Rishers gave me some design direction, which I thought was perfect," says Schlarb. "The idea was to select either really clean, fashion-forward, contemporary items, or totally traditional furnishings—nothing in between. Under the grand, refurbished Victorian banister were stairs leading to a newly built lower level. The lower level guardrail was a pane of glass. That juxtaposition was what Jenn wanted. Either very new, or very old." Schlarb created a high end, beautifully tailored look for the house that still feels comfortable for the laid-back family. In the living room, a color palette inspired by Jenn's favorite color, purple, set the stage for serene elegance. "We wanted to create a show

stopper of a room, but we also wanted it to be a room the family actually used," he says. "So often, the formal living room in a Victorian is a space that guests and residents glide right past on their way to the kitchen or family room." But Schlarb was intent on making the living room a place to stay. An uptown desk area serves as Jenn's office, which brings her into this space on a regular basis.

Stunning midcentury armchairs in purple flank a modern coffee table with Asian-inspired legs. A clean-lined A.

*Rudin sofa* with geo-patterned fabric sits between blocked side tables, each of which boasts a Bubble Table Lamp in parchment and chrome by Sylvan. Breezy window treatments, a crackled surface rug, and a painting from the couple's travels abroad round out the classic contemporary space.

Schlarb had a live-edge table custom made in L.A. for the eat-in kitchen, where a banquette was designed to remind the homeowners of Barcelona, where they have a second home. "They love Gaudi, and an idea was born to use that as our inspiration," says Schlarb. He chose *Porcelaine* by Elitis printed linen for the top portion of the banquette, and Perennials Plushy was used for the rest of the custom piece. "Our team hand selected each tufting that was done by our upholster to be spontaneous and random, yet uniform." The *Cliff Young barstools* were customized using *Christopher Farr Cloth "Mosaic"* in indigo.

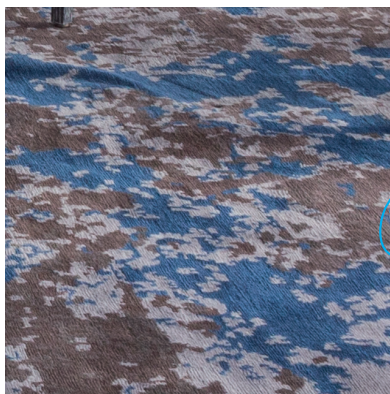
In the formal dining room, David wanted a sense of intimacy for the space—and the ability to close it off to the family room and kitchen when hosting guests. To that end, Schlarb created dramatic drapes that add texture and softness to the space. "Layers are so important, and this has a simplicity to it that doesn't feel overly done," says Schlarb. "The rug is almost Jackson Pollock-like, with the blue and off-white splatters adding just enough color." Designed with Stark, Schlarb used this rug both to anchor and punctuate the dining area. The chairs are cerused for a white-washed look. Jenn was sold on the sculptural lambs and loves the way they enliven the interior space.











“THE  
RUG IS ALMOST  
JACKSON  
POLLOCK LIKE,  
WITH THE BLUE  
& OFF-WHITE  
SPLATTERS  
ADDING JUST  
ENOUGH  
COLOR.”



In the master bedroom, Schlarb started from the ground up—first choosing the *Tony Kitz* rug and then working toward a statement piece headboard. He arrived at a paleblue, velvet “*Avalon*” headboard (Sahco by Bergamo). The chair is upholstered in Pollack fabric called “Flow” in robin’s nest. The brass occasional table with the Shagreen top is by *Scala Luxury*.

*Donghia*’s “Barcelona” in sunshine yellow. “We pulled yellow back into a leading edge tape trim on the window treatments and, voila! The accents, accessories, and artwork are the jewelry we add toward the end.” The rug is antique from Stark. Schlarb gave a bohemian vibe to the teenage daughter’s room, enveloping it with white and letting the Moroccan tapestry be the exclamation point in the room.

In the guest room, Schlarb and the homeowners hoped to have a little fun. “We were looking at color options, and the client really loves blue, and so do I,” says Schlarb. “We found the tabletop color and built the room from there. Creating a fresh, modern mash-up of classic and clean furniture shapes is what interested us.” He fell for the guest room headboard, upholstered in



“I am most proud that this is a personal reflection of the clients themselves, hinting where they traveled, pointing to their love of art, satisfying the level of sophistication they wanted,” says Schlarb. “But we also created artistic, casual spaces that are exciting yet still comfortable.”